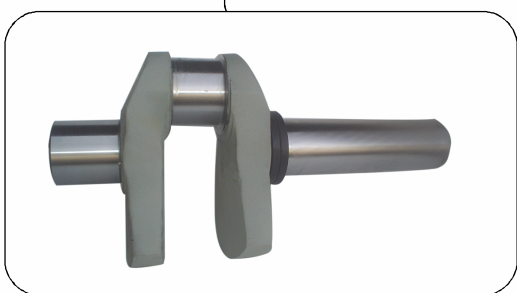
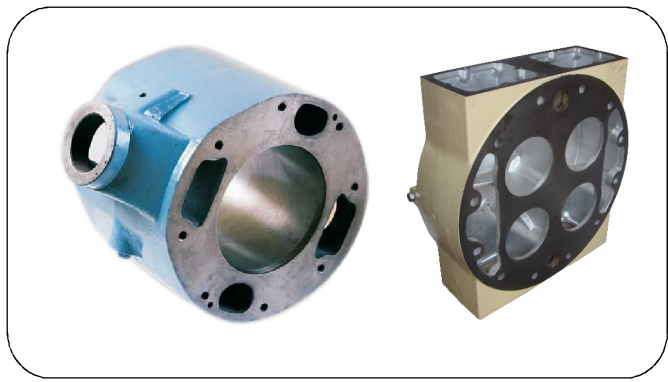


**OEM Quality New Aftermarket Replacement
Spare Parts For Ingersoll Rand Air Compressor
Model : Type 30, ESV, ESH, PHE, IHE, XLE-Lub & Non-Lub**



AN ISO 9001 : 2015 CERTIFIED CO.

All manufacturer's names, numbers, photos, product description and/or part numbers are used for reference purposes only & it is not implied that any part listed is the product of these manufacturers. Since Approvement are made from time to time , the illustration and specifications are subject to change without notice.



Parts For Compressor

OEM Quality New Aftermarket Replacement Spare Parts For Ingersoll Rand Air Compressor Model Type 30

Single & Two Stage Air Compressor

242, 234, 253, 71T2

15T, 30T, 25T2

2340, 2475, 2540, 2545

7100, 3000

Multi Stage High Pressure Air Compressor

231, 7T2, 15T2

Single & Two Stage Vacuum Pump

7V, V235, V244, V255

7VT, V235T, V244T, V255T



Crankshaft | Connecting Rod | Bushes | Service Kit | Valve Assembly | Cylinder | Gasket Kit | Piston | Air Filter Element | Intercooler Tube | Oil Seal | Ring Set | Valve Gasket Kit | Bearing / Connecting Rod Kit | Ring Gasket Kit | Spacer Plate | Stop Plate | Tune up Kit | Flywheel | Piston Assembly | Check Valve | Crankpin Bushing | Safety Valve | Valve Damper | Valve Seat | Pilot Valve | Finger Valve | Crankcase.

All manufacturer's names, numbers, photos, product description and/or part numbers are used for reference purposes only & it is not implied that any part listed is the product of these manufacturers. Since Approvement are made from time to time , the illustration and specifications are subject to change without notice.

**OEM Quality New Aftermarket Replacement Spare Parts For Ingersoll Rand Air Compressor
Model : ESV, ESH, PHE, IHE - Lubricated & Non Lubricated**

ESV & ESH Models – Lub & Non-Lub

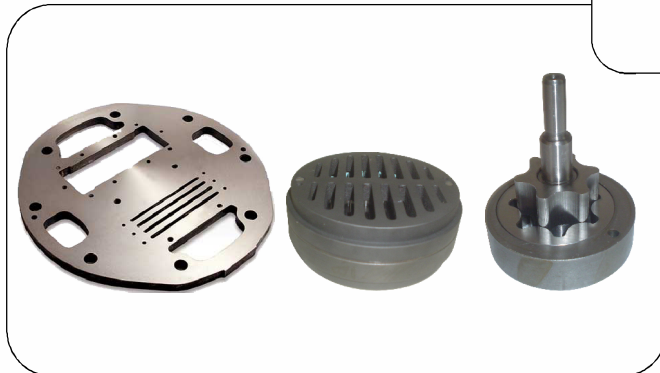
7 x 5, 8 x 5, 9.5 x 5,
8 x 7, 9.5 x 7, 11 x 7,

PHE – Lub & Non-Lub

10 & 5 x 7, 12 & 5 x 7, 12 & 7 x 7,
16 & 10 x 7,
14 & 6 x 9, 17 & 9 x 9, 17 & 9 & 4.5 x 9,
12 & 5 & 4 x 7, 12 & 7 & 5 x 7,

IHE – Lub & Non-Lub

12 & 6.5 x 7 IHE -2 NL2,
12 & 7 x 7 IHE-5 NL,
12 & 12 x 7 IHE-NL,
16 & 9B x 7 2IHE-2NL-2,



Valve Assembly | Crankshaft | Port Plate | Valve | Piston Ring Unloader | Oil Pump | Ring & Spring | Connecting Rod | Channel & Spring Set | Valve Seat | Stop Plate Inlet | Plate Seat | Holder guide | Crab Discharge | Discharge Valve | Inlet Valve | FAU Complete | Unloader Cage | Unloader Plunger | Piston Ring | Wearing Ring | Scrapper Ring | Packing Ring | Seat Valve | Wear Strip | Balance Flow.

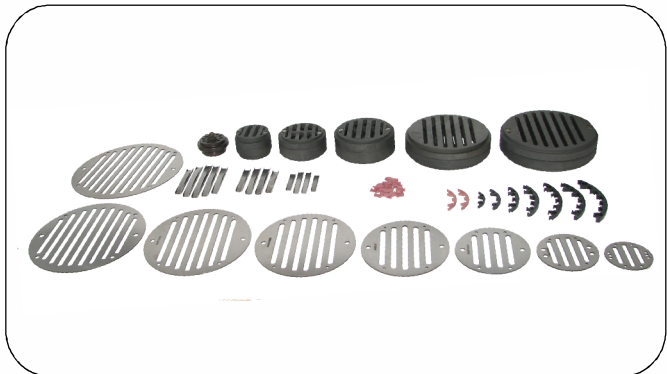
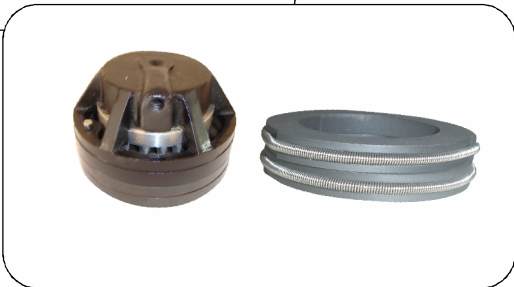


Parts For Compressor

OEM Quality New Aftermarket Replacement Spare Parts For Ingersoll Rand Air Compressor Model : XLE - Lubricated & Non Lubricated

XLE Models – Lub & Non-Lub

- 14 1/2" - 9" x 7", 16" - 9" x 7",
- 16" - 10" x 7", 17" - 10" x 7",
- 18 1/2" - 11 1/2" x 8 1/2",
- 19" - 11 1/2" x 8 1/2",
- 20 1/2" - 11 1/2" x 8 1/2",
- 20 1/2" - 12 1/2" x 8 1/2",
- 21 1/2" - 12 1/2" x 8 1/2",
- 22" - 13 1/2" x 10",
- 24 1/4" - 13 1/2" x 10",
- 24 1/4" - 14 1/2" x 10",
- 25" - 14 1/2" x 10",
- 26" - 14 1/4" x 10",
- 28" - 16" x 10" XLE-2,



Cylinder Head | Cylinder | Connecting Rod | Piston Rod | Cross Head | Port Plate | Discharge Valve | Inlet Valve | FAU Complete | Valve Cover | Unloader Cage | Unloader Plunger | Piston Ring | Wearing Ring | Scrapper Ring | Packing Ring | Seat Valve Inlet | Wear Strip | Balance Flow.

All manufacturer's names, numbers, photos, product description and/or part numbers are used for reference purposes only & it is not implied that any part listed is the product of these manufacturers. Since Approvement are made from time to time , the illustration and specifications are subject to change without notice.

Division of :

Vikay Mining Equipments

Vile Parle (West), Mumbai - 400 056. INDIA.
Tel. : +91 - 22 - 2623 7205 / 2624 3729
Email : vkmining@gmail.com, Website : www.partsforcompressor.com



URS is a member of Registrar of Standards (Holdings) Ltd.